

staszek stuart-thompson

1st Class MA (Hons) Architectural Design
(ARB/RIBA Part 1)
University of Edinburgh

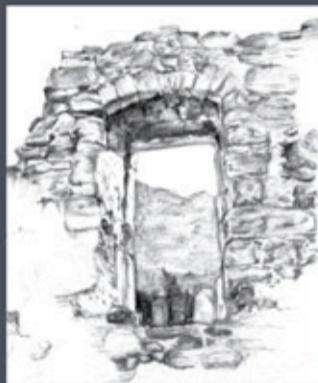
Master of Architecture
(ARB/RIBA Part 2)
University of Edinburgh

a: 131, The Street, Framsdon, Stowmarket, Suffolk, IP14 6HF

t: 07890 397020

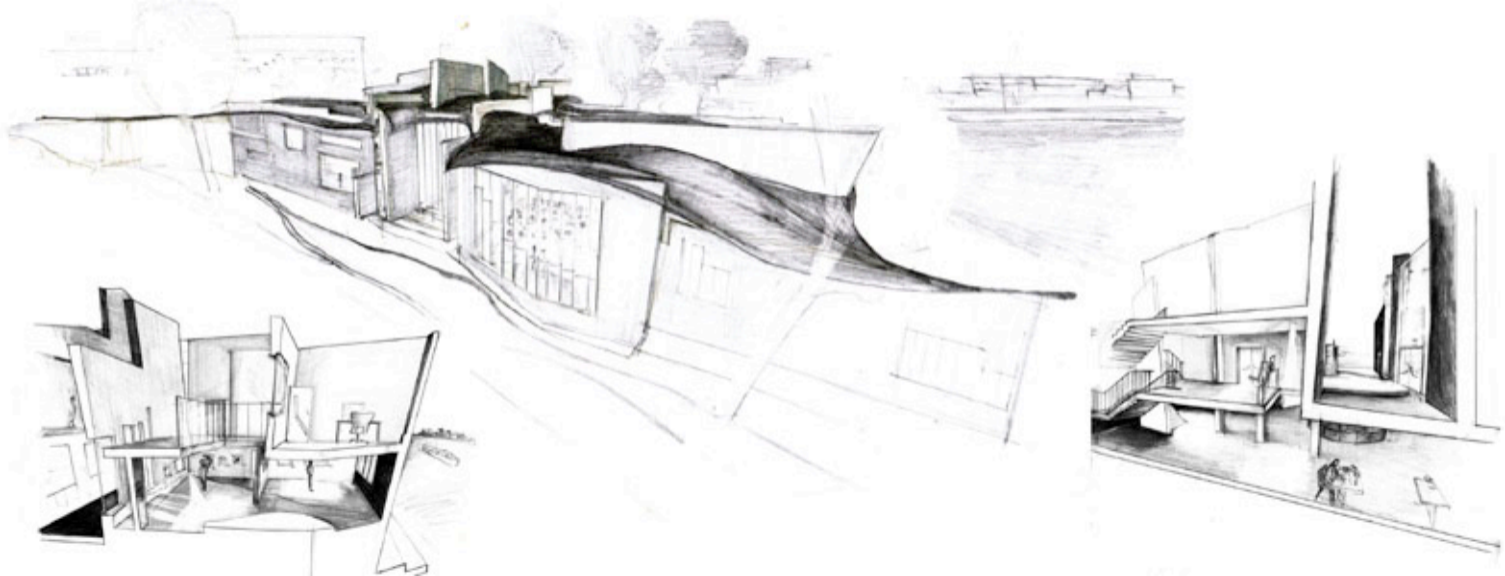
e: staszek.jst@gmail.com

w: www.staszek.co.uk



This booklet presents some of my work over the two degree courses at Edinburgh University which contributed to a First Class Honours (MA) degree in Architectural Design and a Masters degree in Architecture. Both courses were accredited by the ARB and the RIBA.

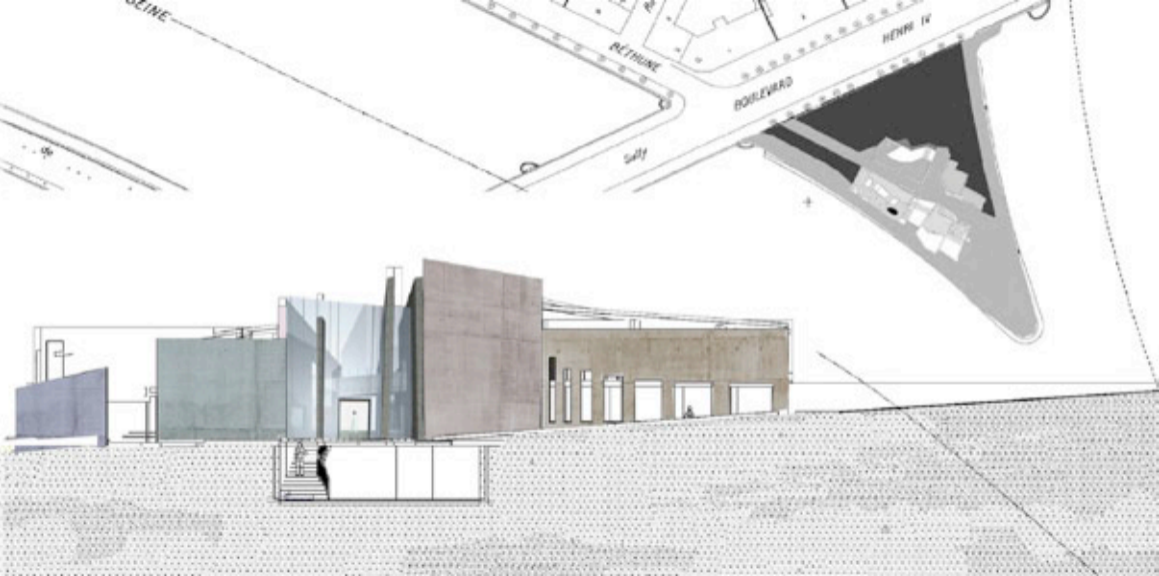


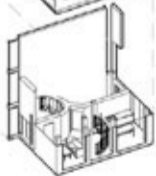
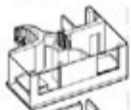
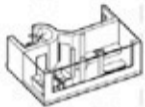
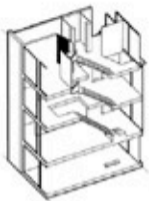
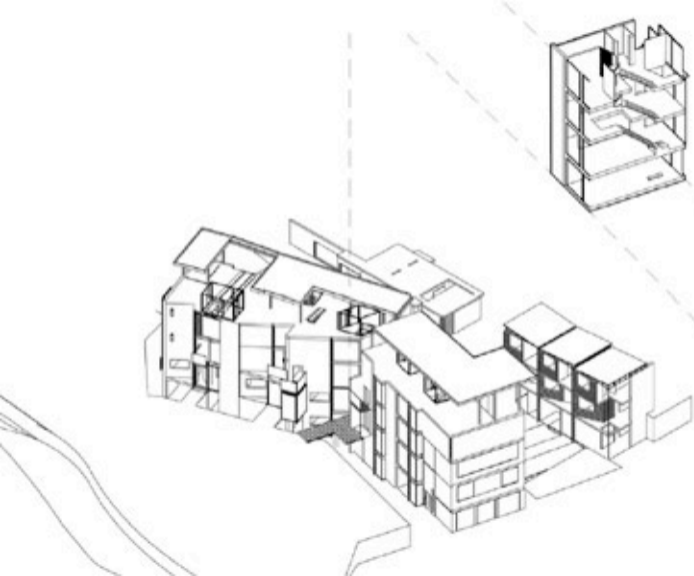


PART 1
YEAR 2

Museum and Archive: Paris

Ile de la Cité, in the centre of Paris, was the site for an archive for the works of Walter Benjamin. Fragmented in form like the assortment of writings in his 'Arcades project', spaces are differentiated with coloured concrete and glass. Excavated into an embankment, it also provided a new public space on the banks of the Seine.

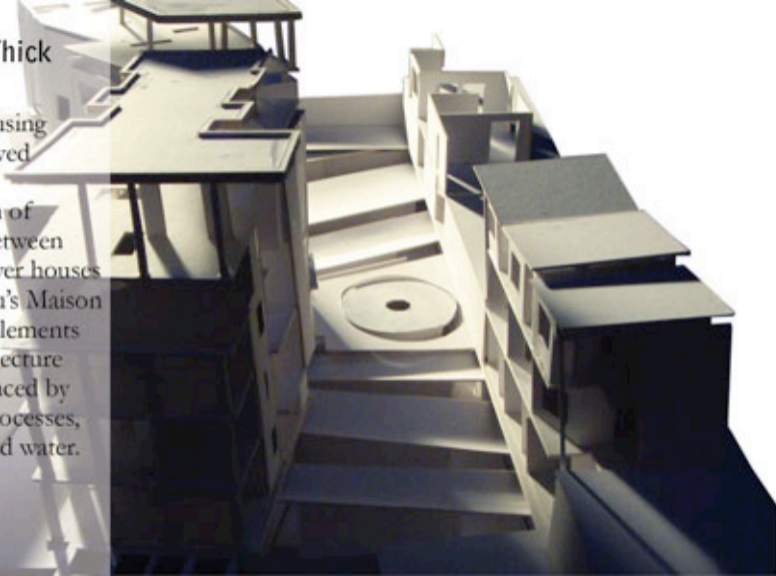




PART 1
YEAR 3

Through Thick and Thin

A social housing project derived through an examination of thickness between Scottish tower houses and Chareau's Maison de Verre. Elements in the architecture were influenced by habitable processes, site, light and water.

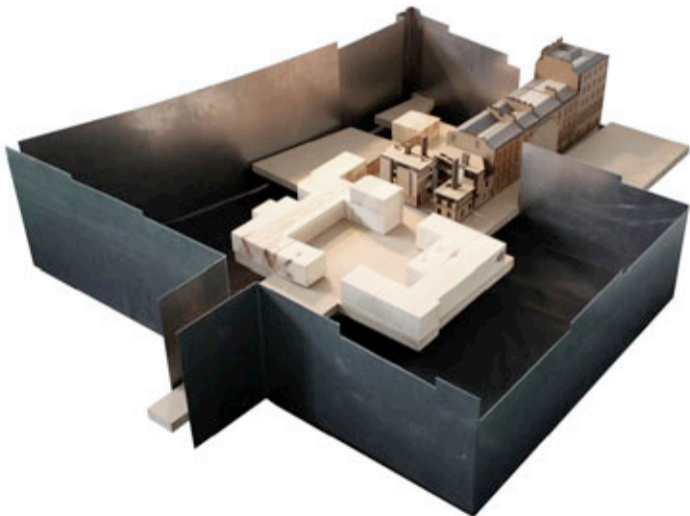


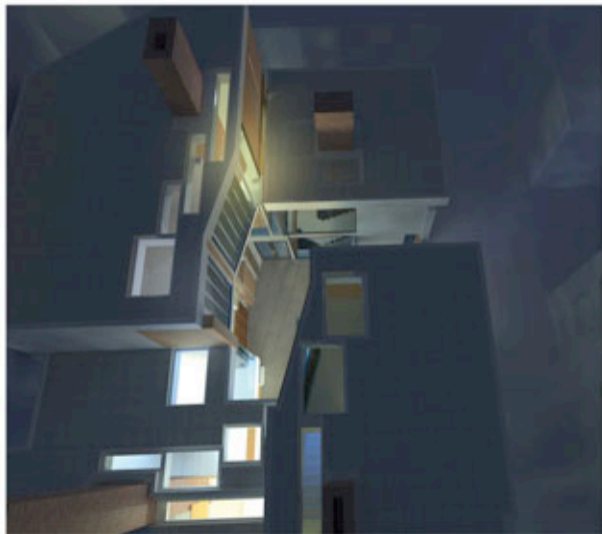
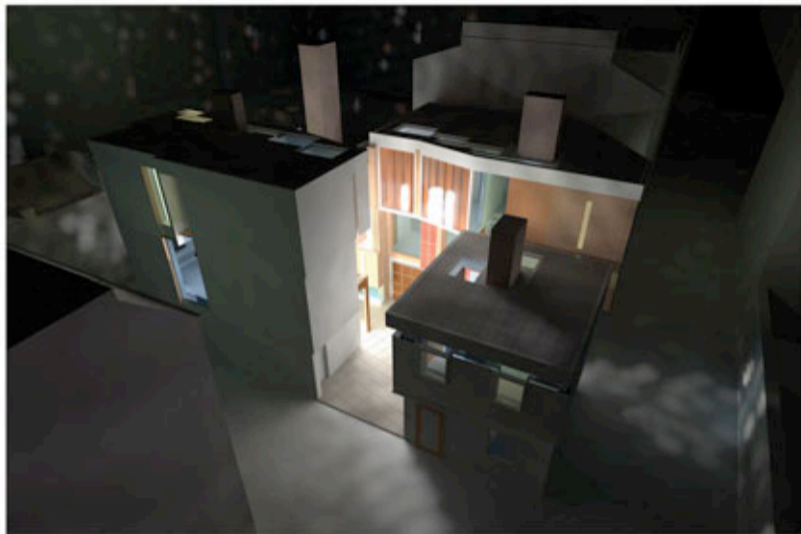


PART 1
YEAR 3

Fireside Manners

Three residences and a bakery in Dublin Meuse, Edinburgh, were constructed around four hearths. These were positioned to reflect the Scottish building regulations and the architecture was based around the phenomenology of fire.

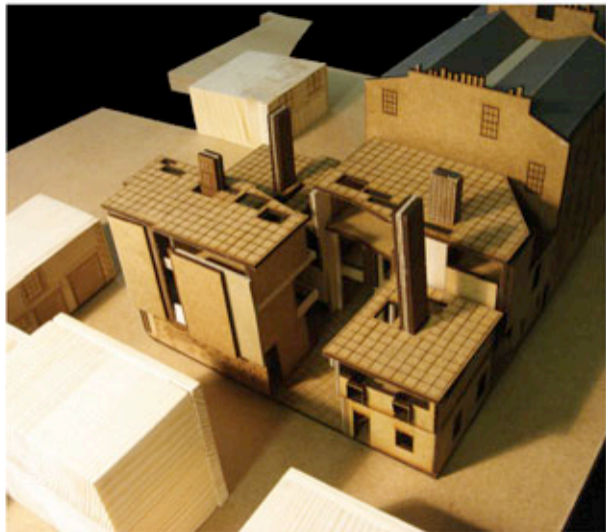




PART 1
YEAR 3

Fireside Manners

Fire provides both reverie in the home and the utilitarian functions of heating and lighting. The thermal mass and insulation of the building helps provide a sustainable structure, whilst locally sourced brick and timber materials would keep embodied energy low.





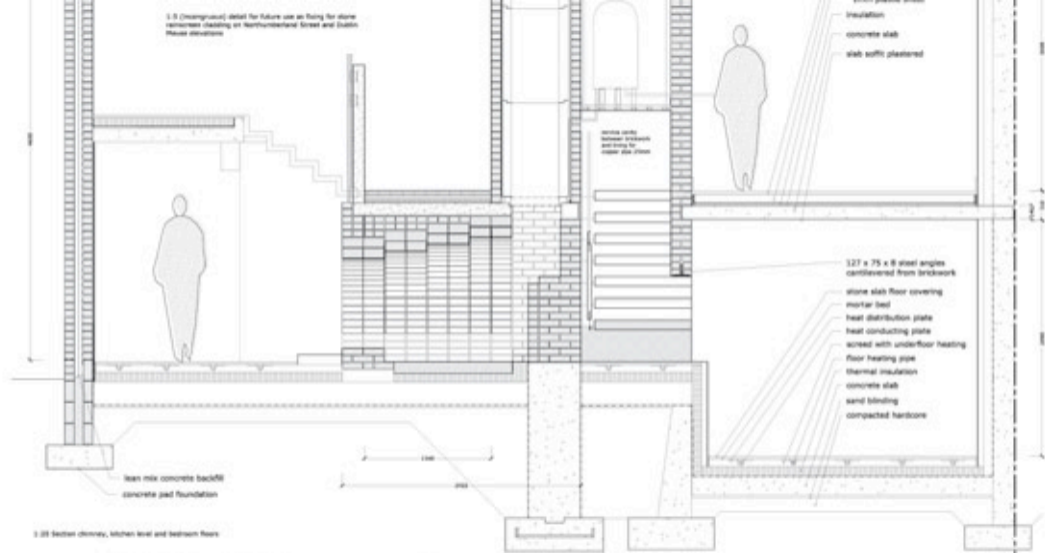
1:100 exploded isometric of water heating rods 1:250 Ground floor plan



PART 1
YEAR 3

Technical Study

Detail section
through the hearth.

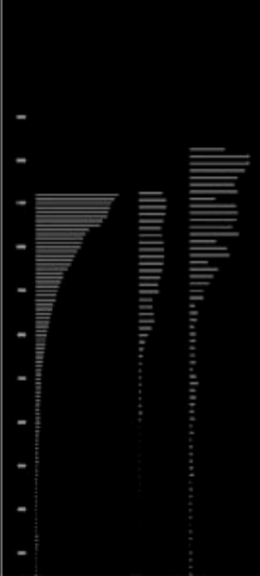


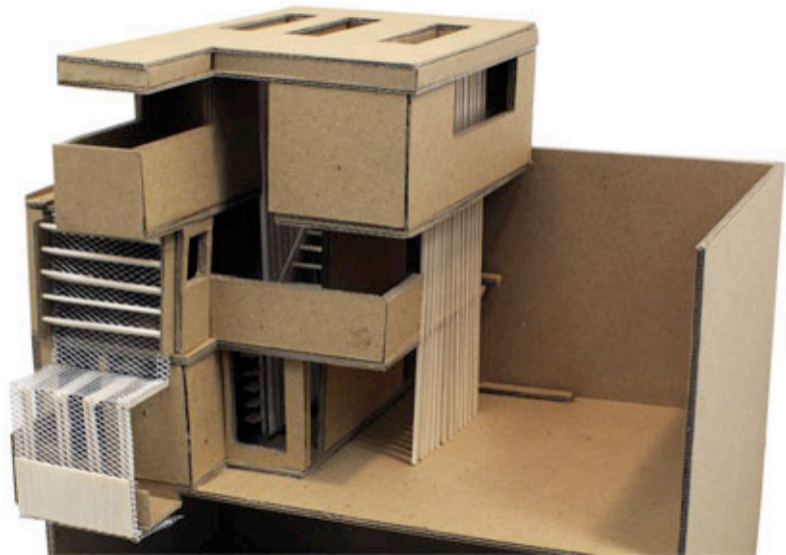
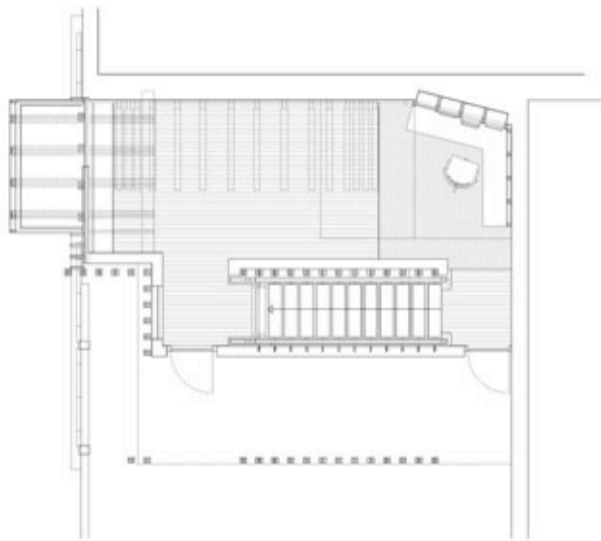


PART 2
YEAR 1

Light Study

An investigation into the light in the stairwells in the Faculty of Divinity's New College, Edinburgh. An installation was created with drawings, videos and light measurements of three staircases studied. These were positioned in a scaled space organised around a wooden handrail.





PART 2
YEAR 1

House for an Outsider

Albert Camus was chosen as an outsider to the city of Marseille, where this house provided both a high observation platform and a secluded space of retreat in which he could work. The spaces were both informed and modelled around his practice of everyday life, the light conditions and context.

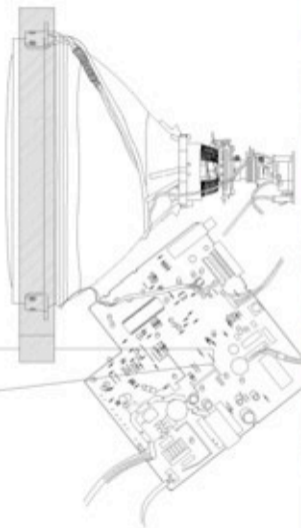


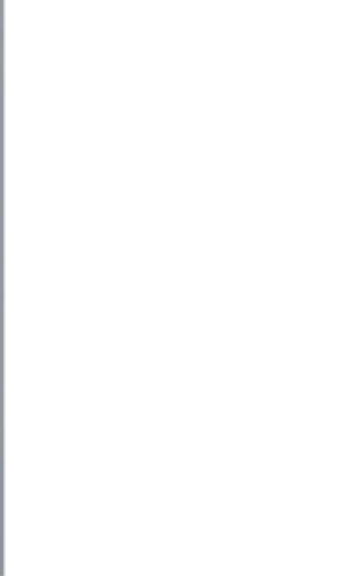


PART 2
YEAR 1

House for an Outsider

Various images and videos of the interior spaces of the house were modelled and shown on a TV mounted on a wooden structure. This enabled it to be repositioned in relation to different exterior and interior contexts.

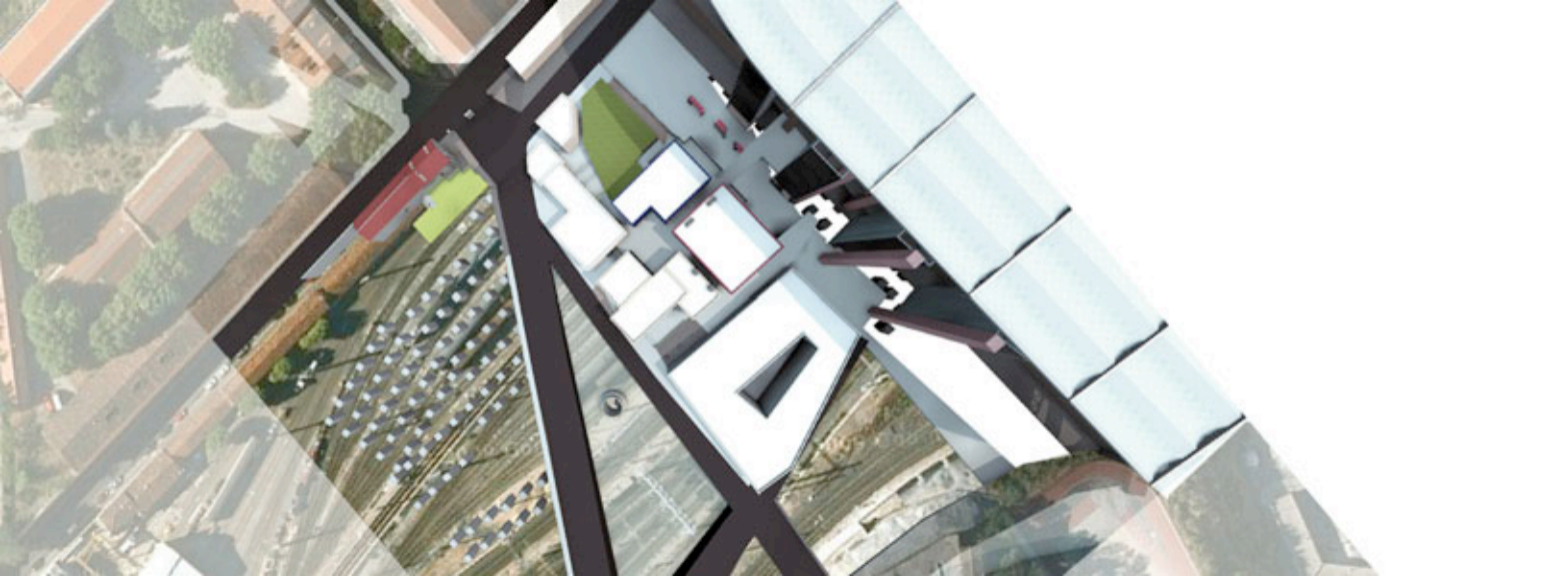




PART 2
YEAR 1

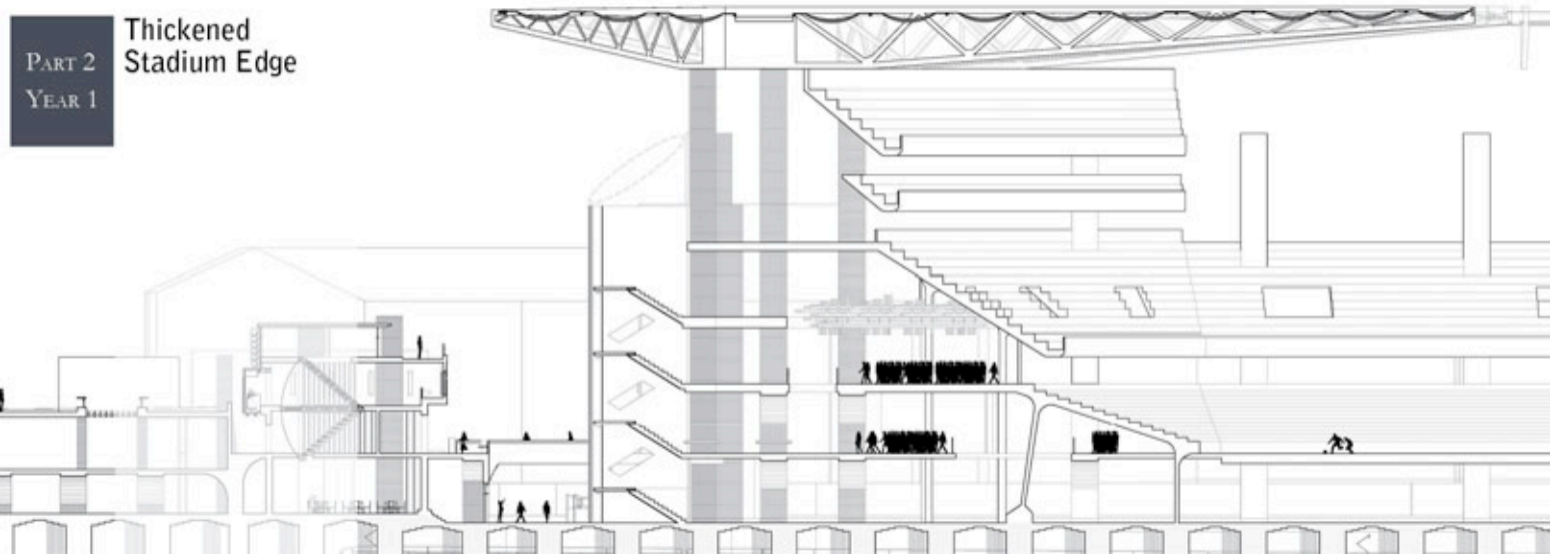
House for an Outsider





PART 2
YEAR 1

Thickened Stadium Edge

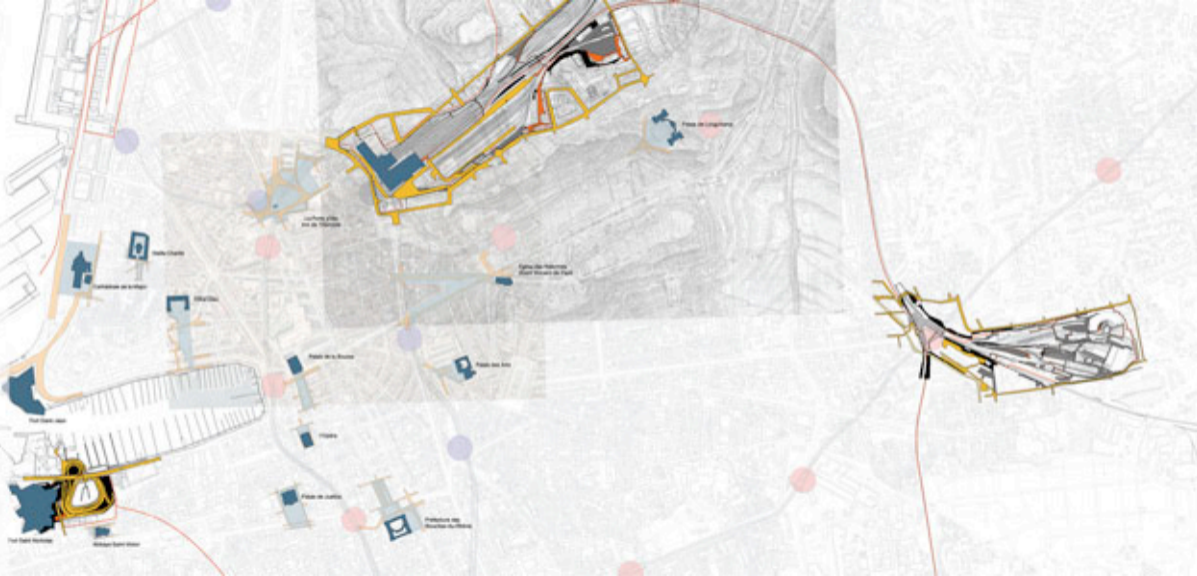


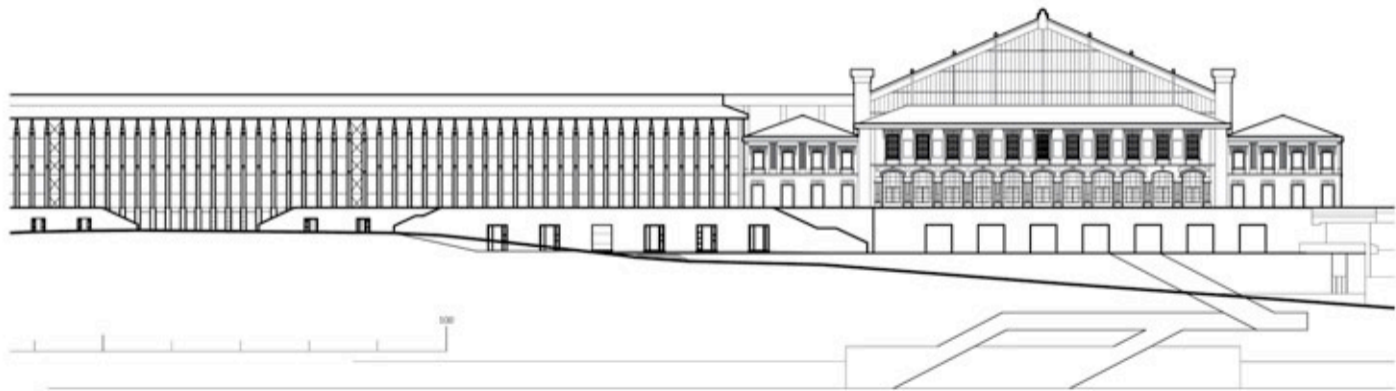


PART 2
YEAR 2

Marseille Maps

These maps show the intentions for intervening into the urban fabric of Marseille. The focus was on the station as a symbolic barrier between the north and the south of the city, the infrastructure networks and Marseille as a gateway to Europe.



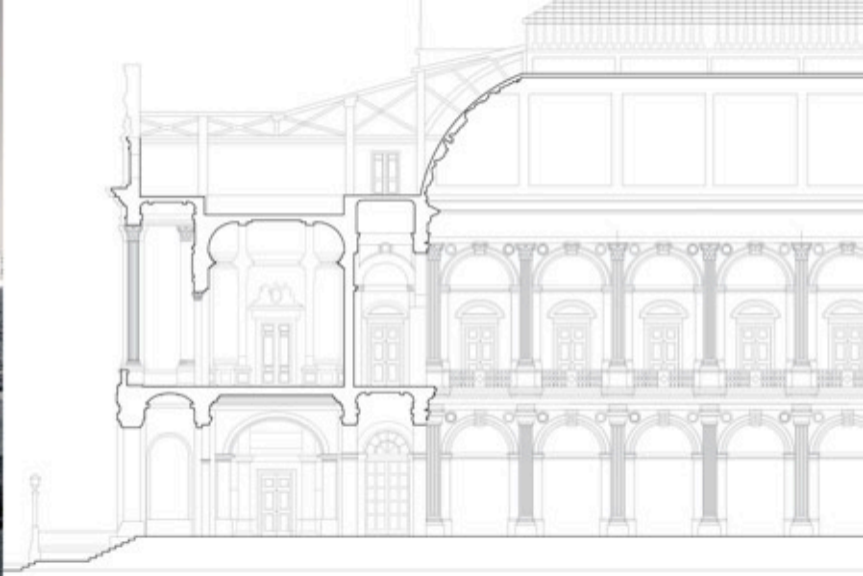


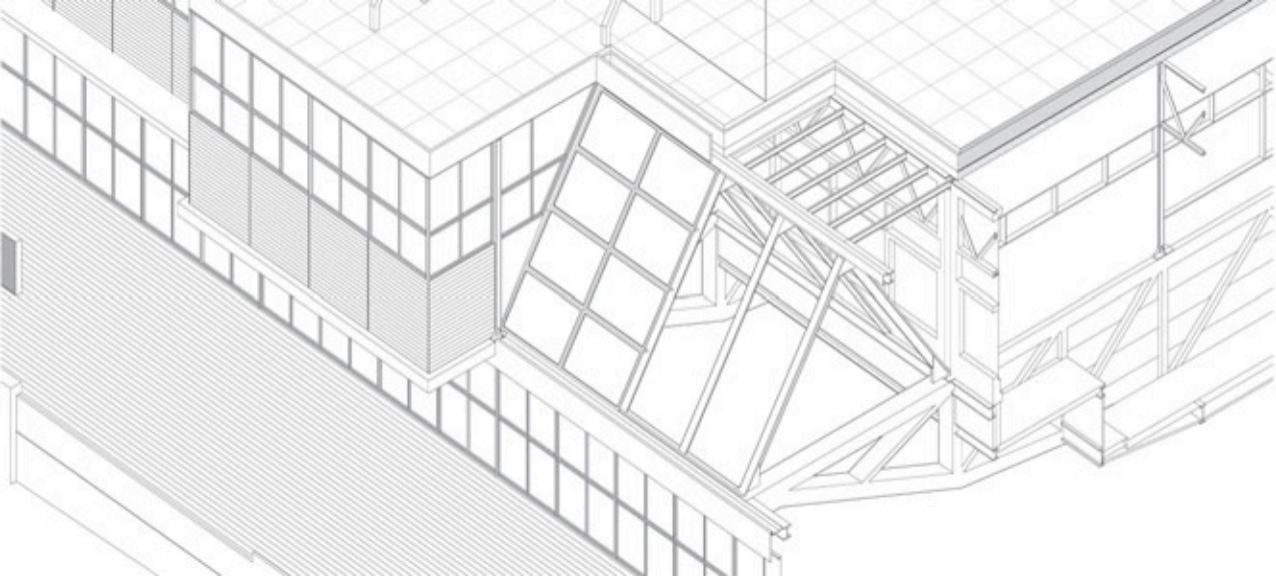
PART 2
YEAR 2

Marseille Structures

Left: The elevation of the Gare Saint-Charles, the main railway station in Marseille.

Right: A section and elevation detail of the city's Centre Bourse (old stock exchange), a notable building on the processional route to the sea from the station.

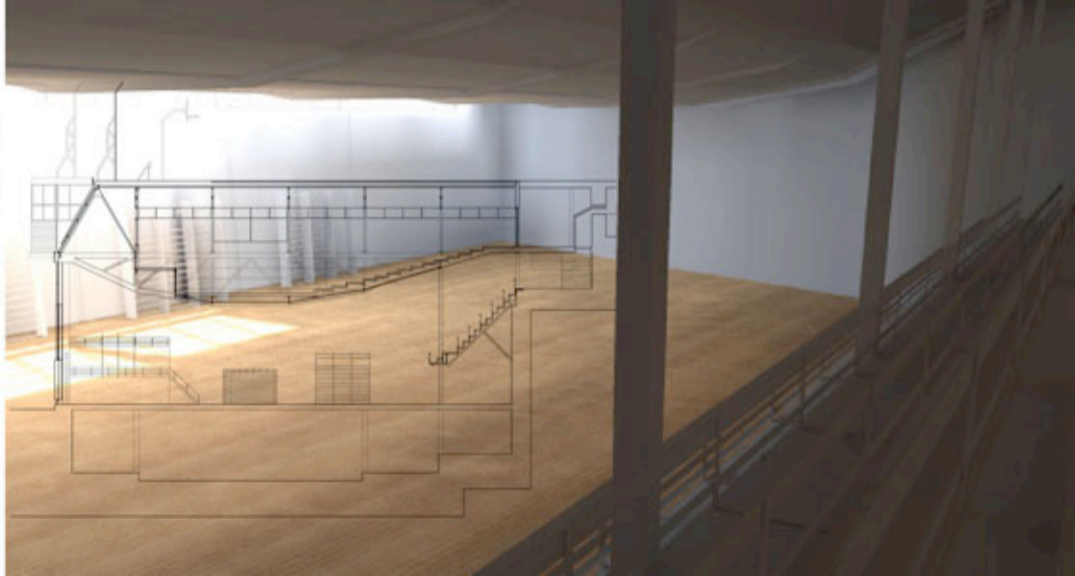




PART 2
YEAR 2

Precedent Study

Alejandro de la Sota's Gimnasio Maravillas, Madrid. The combination of his solutions to structure, light, noise, program accommodation and building against a rock face through an ingenious section, laid the foundations for what I hoped to produce with a school in Marseille.





tes

Provence-Alpes-Côte d'Azur



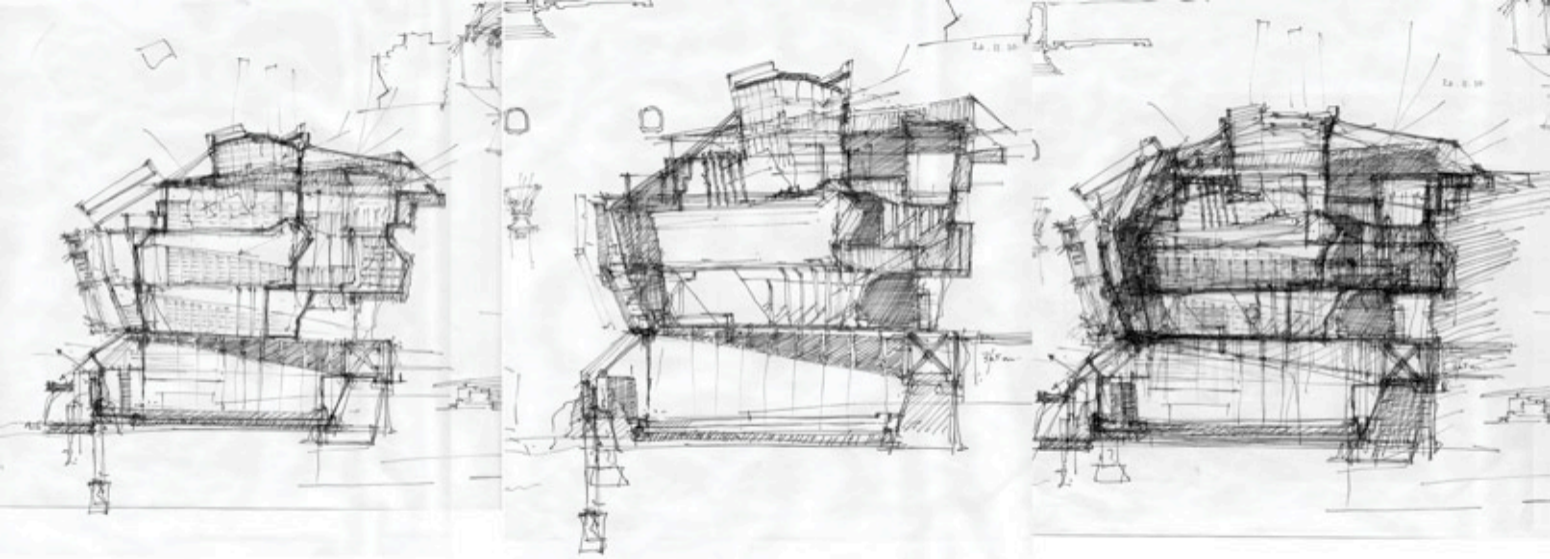
Région
Provence
Alpes
Côte d'Azur

FA



Collège Saint Charles

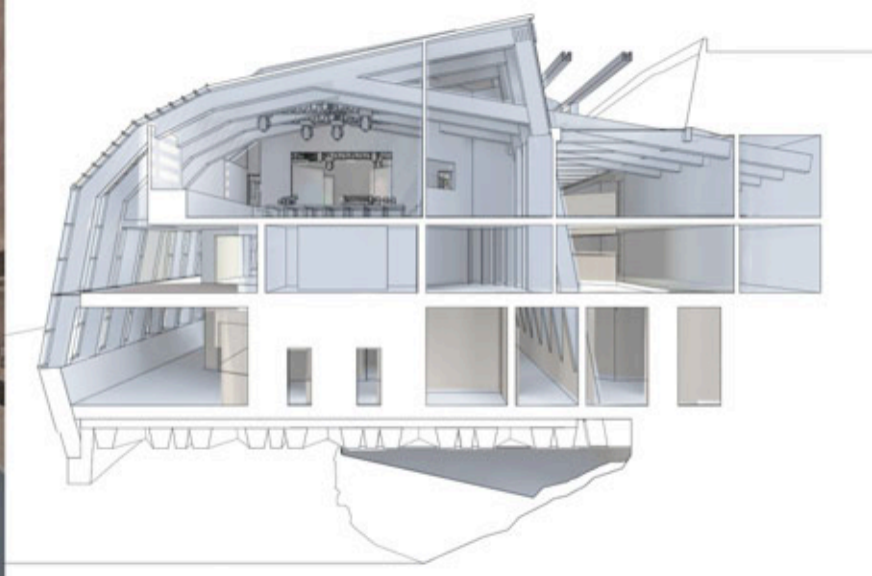
A middle school project was proposed for Marseille to grow from the destroyed hill of the Saint Charles district. It was to act as a catalyst for the eventual bridging of the railway lines, an act of reconfiguring the landscape as city rather than uniquely infrastructure space.

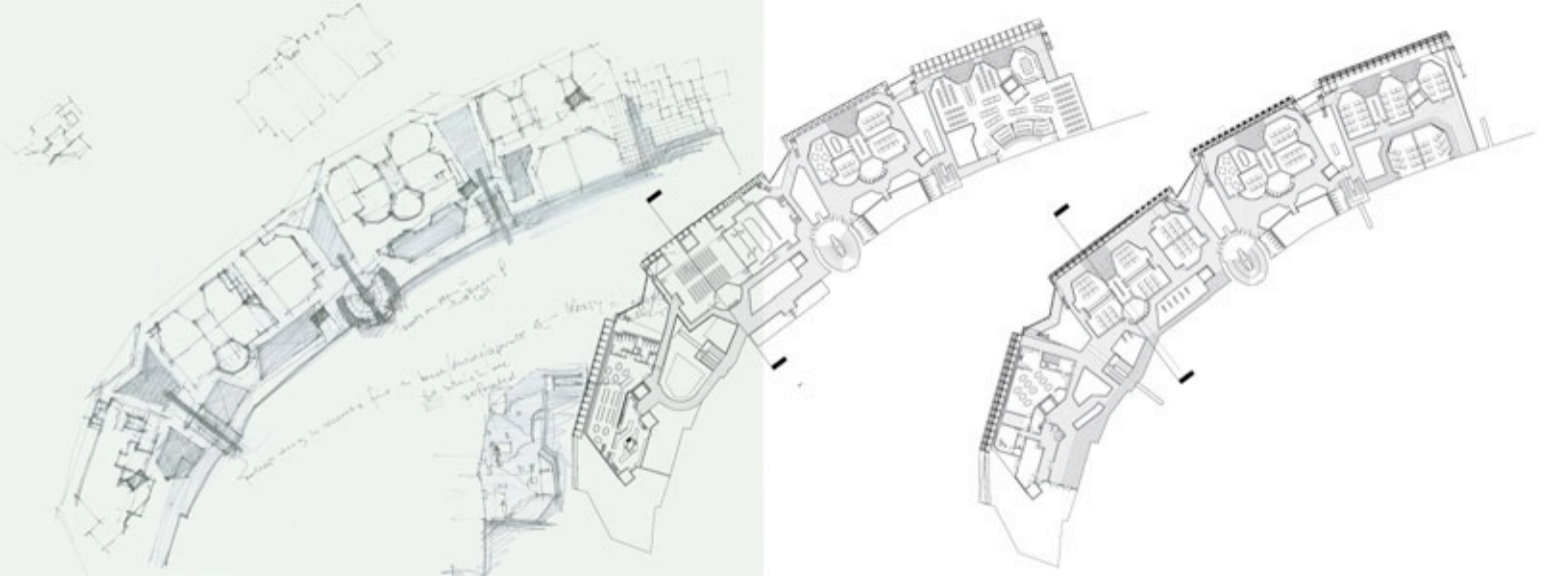


PART 2
YEAR 2

Collège Saint Charles

Centrally positioned rooms would be enclosed within a second skin which would allow for play areas, external teaching zones and a lit space for circulation and interaction.

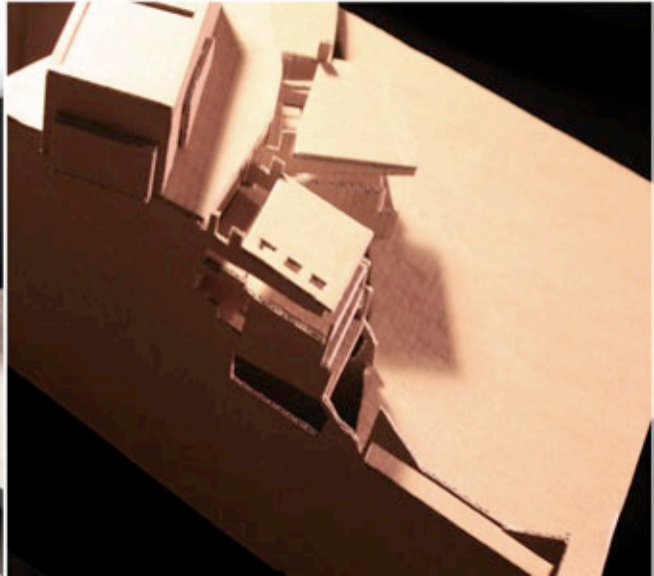




PART 2
YEAR 2

Collège Saint Charles

The plan reveals the organisation of the different teaching areas and the positioning of the main congregational spaces - the hall, dining room, library and the staff room - positioned on the highest level. In between each classroom block would be light open spaces with views across the city, and stairwells built into the cliff edge.





PART 2
YEAR 2

Urban Plan

In attempting to heal the fissure of the railway at the city scale by bridging (diagrammed to the left), projects such as reconfiguring the train sheds into housing and a new public square were created (right). These aimed to provide moments would draw people in from both banks of the lines and stimulate social interaction.





PART 2
YEAR 2

Wooden Models

Group work in which we looked for cohesive parts of the urban fabric. This understanding of the wider use and structure of the city were modelled as morphological maps and thereby highlighted barriers and potentialities between districts.





Year Out: Ipswich and Johannesburg

Work conducted at OWL Architects in Ipswich (left) and at Activate Architects (right). Housing, extensions and care homes were the main work in Suffolk, while in South Africa the team worked on a large new school project.



LEBONE II COLLEGE OF THE ROYAL BAFOKENG
ALTERNATE ROOF DESIGN OPTION 1





PART 2
YEAR 2

Water Feature

A summer project opportunity to design and build a water feature for my father's new house. Fabric formed concrete sculptures (something researched at Edinburgh) were cast which allow cascading water in steel troughs and provide an unusual centrepiece.





a: 131, The Street, Framsdon, Stowmarket, Suffolk, IP14 6HF

t: 07890 397020

e: staszek.jst@gmail.com

w: www.staszek.co.uk